

ADAR

UNIVERSAL



June
2023

DURABLE BASICS • CLASSIC STYLES • EVERYDAY VALUE

Table of Content

5 FABRIC DETAILS

6 602
WOMEN'S JACKET

7 604
WOMEN'S TOP

8 2629
WOMEN'S TOP

9 2900
WOMEN'S TEE

10 601
UNISEX TOP

11 701
UNISEX SET

12 506
WOMEN'S BOTTOM

13 504
UNISEX BOTTOM

14 607
MEN'S JACKET

16 709
UNISEX APRRON

17 702
UNISEX APRRON

18 707
WOMEN'S SKIRT

19 703
WOMEN'S SKIRT

20 2801
WOMEN'S DRESS

21 2810
WOMEN'S DRESS

24 806
WOMEN'S LAB COAT

25 811
WOMEN'S LAB COAT

26 2814
WOMEN'S LAB COAT

27 2817
WOMEN'S LAB COAT

28 803
UNISEX LAB COAT

29 805
UNISEX LAB COAT

30 808
UNISEX LAB COAT

31 2816
UNISEX LAB COAT

END OF SEASON STYLES

32 605
WOMEN'S TOP

33 628
WOMEN'S TOP

34 2600
UNISEX TOP

35 6011
UNISEX TOP

36 503
WOMEN'S BOTTOM

37 510
WOMEN'S BOTTOM

38 804
WOMEN'S LAB COAT

40 FIT GUIDE/SIZE CHARTS



FABRIC FEATURES

Durable and nonelastic basics.
Timeless functional designs.



65% POLYESTER 35% COTTON, POPLIN

Care Instructions



Machine Wash Cold
With Light Colors
Tumble Dry Low
Iron Low

Do Not Iron Directly Over Label



STYLE 602 | CLASSIC FIT | WOMEN'S

WARM-UP JACKET

- Stitched round neckline
- Four-button snap front closures
- Long set-in sleeves with rib-knit cuffs
- Two roomy patch pockets
- Constructed with extra room for ease and comfort movement

Center back length 29" in size M

65% Polyester 35% Cotton, Durable Poplin

AVAILABLE SIZES: XXS-5X



STRENGTH



EASY CARE



COTTON BLEND

BLACK	RED
BURGUNDY	REGAL BLUE
CARIBBEAN BLUE	ROYAL BLUE
CEIL BLUE	SHERBET
HUNTER GREEN	SILVER GRAY
KHAKI	SURGICAL GREEN
LAVENDER	TEAL BLUE
NAVY	TURQUOISE
PEWTER	WHITE
PURPLE	

STYLE 604 | CLASSIC FIT | WOMEN'S

DOUBLE POCKET SNAP FRONT TOP

- Snap Front V-neckline Scrub top
- Short set-in sleeves
- 5 snap front closures
- 2 double patch pockets with pen divider
- Side vents for easy movement and comfortable fit

Center back length 27 1/2" in size M

65% Polyester 35% Cotton, Durable Poplin

AVAILABLE SIZES: XXS-5X



STRENGTH



EASY CARE



COTTON BLEND

BLACK	NAVY
BURGUNDY	PEWTER
CARIBBEAN BLUE	PURPLE
CEIL BLUE	ROYAL BLUE
HUNTER GREEN	TEAL BLUE
KHAKI	WHITE





STYLE 2629 | CLASSIC FIT | WOMEN'S

LAPEL COLLAR BUTTONED TOP

- Front princess seaming
- Angled patch pockets
- Lapel Collar
- Short set-in sleeves
- 5 Button front closure
- Buttoned back belt with soft shirring

Center back length 27" in size M
65% Polyester 35% Cotton, Durable Poplin

AVAILABLE SIZES: XXS-5X



STRENGTH



EASY CARE



COTTON BLEND

WHITE



STYLE 2900 | CLASSIC FIT | WOMEN'S

LONG SLEEVE COMFORT TEE

- Beautiful Stitched Crew Neckline
- Tagless neck for comfort

Center back length 26" in size M
65% Polyester 35% Cotton Durable Jersey Knit

AVAILABLE SIZES: XXS-3X

BLACK	TEAL GREEN
BURGUNDY	CITRON
CARIBBEAN BLUE	FUCHSIA
WHITE	RED
LAVENDER	BLUSH
ROYAL BLUE	SPEARMINT
PURPLE	OLIVE
SHERBET	NEON ORANGE
EGGPLANT	DARK MARL GRAY
SEA GLASS	HEATHER CHARCOAL
AQUAMARINE	NEON LIME GREEN
CEIL BLUE	NEON PINK
PEWTER	MARL GRAY
HUNTER GREEN	
KHAKI	
NAVY	



NEW

CARAMEL
COFFEE
MARTINI OLIVE
MOCHA QUARTZ
RED OCHRE
SPRING LEAF

END OF SEASON

POOL BLUE
HEATHER EGGPLANT
HEATHER FUCHSIA
HEATHER PURPLE
HEATHER POOL BLUE
HEATHER ROYAL BLUE



STYLE 601 | CLASSIC FIT | UNISEX

V-NECK TUNIC 3 POCKET

- Short set-in sleeves
- Two roomy bottom patch pockets
- Chest pocket with pen divider
- Side vents for easy movement and comfortable fit

Center back length 28 1/2" in size M

65% Polyester 35% Cotton, Durable Poplin

AVAILABLE SIZES: XXS-5X



STRENGTH



EASY CARE



COTTON BLEND

BLACK	PURPLE
BURGUNDY	RED
CARIBBEAN BLUE	REGAL BLUE
CEIL BLUE	ROYAL BLUE
HUNTER GREEN	SHERBET
KHAKI	SILVER GRAY
LAVENDER	SUBMARINE
MANDARIN ORANGE	SURGICAL GREEN
NAVY	TEAL BLUE
OLIVE	TURQUOISE
PEWTER	WHITE

STYLE 701 | CLASSIC FIT | UNISEX

DRAWSTRING SCRUB SET

- V-neckline top
- Two roomy bottom patch pockets
- Side vents for easy movement and comfortable fit
- Drawstring scrub pants
- One back right hip pocket
- Flat-woven dyed-to-match drawstring
- Natural-rise, tapered legs

Top: Center back length 28 1/2" in size M

Pant: Inseam 31"

65% Polyester 35% Cotton, Durable Poplin

AVAILABLE SIZES: XXS-5X



STRENGTH



EASY CARE



COTTON BLEND

BLACK	PURPLE
BURGUNDY	RED
CARIBBEAN BLUE	REGAL BLUE
CEIL BLUE	ROYAL BLUE
HUNTER GREEN	SHERBET
KHAKI	SILVER GRAY
LAVENDER	SUBMARINE
MANDARIN ORANGE	SURGICAL GREEN
NAVY	TEAL BLUE
OLIVE	TURQUOISE
PEWTER	WHITE





STYLE 506 | CLASSIC FIT | WOMEN'S

MULTIPOCKET CARGO PANTS

- Comfort wide full elastic waistband with inner drawstring
- Side slash roomy pockets on waist
- Cargo pocket, cell phone pocket, scissors pocket on right leg
- Cargo pocket with flap and button on left leg and one back hip pocket
- Natural-rise, tapered legs

Regular Inseam 30"
506P Petite Inseam 27 1/2"
506T Tall Inseam 32 1/2"

65% Polyester 35% Cotton, Durable Poplin

AVAILABLE SIZES

Regular: XXS-5X
Petite: XXS-5X
Tall: XS-3X



STRENGTH



EASY CARE



COTTON BLEND

BLACK *	PURPLE *
BURGUNDY **	RED *
CARIBBEAN BLUE**	REGAL BLUE **
CEIL BLUE **	ROYAL BLUE **
HUNTER GREEN **	SILVER GRAY **
KHAKI **	SUBMARINE *
LAVENDER *	TEAL BLUE **
NAVY **	TURQUOISE *
OLIVE	WHITE **
PEWTER **	

* Available in Regular & Petite
 ** Available in Regular, Petite & Tall

STYLE 504 | CLASSIC FIT | UNISEX

DRAWSTRING PANTS

- Patch cargo pocket on right-leg
- One back hip pocket
- Flat-woven dyed-to-match drawstring
- Natural-rise, tapered legs

Regular Inseam 31"
504P Petite Inseam 28 1/2"
504T Tall Inseam 33 1/2"

65% Polyester 35% Cotton, Durable Poplin

AVAILABLE SIZES

Regular: XXS-5X
Petite: XXS-3X
Tall: XS-3X



STRENGTH



EASY CARE



COTTON BLEND

BLACK **	PURPLE
BURGUNDY **	RED
CARIBBEAN BLUE	ROYAL BLUE **
CEIL BLUE **	SHERBET
HUNTER GREEN **	SILVER GRAY
KHAKI **	SUBMARINE
LAVENDER *	SURGICAL GREEN
MANDARIN ORANGE	TEAL BLUE **
NAVY **	TURQUOISE
OLIVE	WHITE **
PEWTER **	

* Available in Regular & Petite
 ** Available in Regular, Petite & Tall



2 POCKETS TOTAL



7 POCKETS TOTAL



STYLE 607 | CLASSIC FIT | MEN'S

ZIPPERED JACKET

- Collared neckline with short set-in sleeves
- Front yoke and back narrow midriff with crisp pleats
- Zip front closure
- Multiple functional pockets
- Two angled patch pockets and a chest pocket with pen divider

Center back length 29" in size M
65% Polyester 35% Cotton, Durable Poplin
AVAILABLE SIZES: XXS-5X



STRENGTH



EASY CARE



COTTON BLEND

BLACK

NAVY

BURGUNDY

ROYAL BLUE

CEIL BLUE

WHITE

KHAKI



DURABLE, LONG LASTING SCRUBS



STYLE 709 | CLASSIC FIT | UNISEX

BELT APRON 2-PACK

- Easy to wear workman style
- Extra long strings to tie
- 3 Full deep pockets

65% Polyester 35% Cotton, Durable Poplin

AVAILABLE SIZES

R

		
STRENGTH	EASY CARE	COTTON BLEND

BLACK	PEWTER
BURGUNDY	ROYAL BLUE
CEIL BLUE	SHERBET
HUNTER GREEN	WHITE
NAVY	



STYLE 702 | CLASSIC FIT | UNISEX

COBBLER APRON

- Full front and back offers optimal coverage
- Self trim along edges
- Side ties and deep front pockets

Center back length 27 1/4"

65% Polyester 35% Cotton, Durable Poplin

AVAILABLE SIZES

R X

		
STRENGTH	EASY CARE	COTTON BLEND

BLACK	PURPLE
BURGUNDY	RED
CEIL BLUE	REGAL BLUE
HUNTER GREEN	ROYAL BLUE
KHAKI	SHERBET
LAVENDER	SILVER GRAY
NAVY	SUBMARINE
MANDARIN ORANGE	TEAL BLUE
OLIVE	TURQUOISE
PEWTER	WHITE





STYLE 707 | CLASSIC FIT | WOMEN'S

MID-CALF LENGTH DRAWSTRING SKIRT

- Straight cut
- Drawstring ties and front zipper closure
- Two roomy side pockets
- Back stitched yoke at waistline defines darts in the back
- Back slit for ease movement

Center back length 29" in size 12

65% Polyester 35% Cotton, Durable Poplin

AVAILABLE SIZES

6-24



STRENGTH



EASY CARE



COTTON BLEND

BLACK	NAVY
BURGUNDY	PEWTER
CEIL BLUE	ROYAL BLUE
HUNTER GREEN	TURQUOISE
KHAKI	WHITE
LAVENDER	



STYLE 703 | CLASSIC FIT | WOMEN'S

A-LINE PATCH CARGO POCKET SKIRT

- Elastic comfort skirt
- Wide comfort all around elastic waistband
- A-line cut shape
- Two patch cargo pockets
- Back slit for ease movement

Center back length 28" in size M

65% Polyester 35% Cotton, Durable Poplin

AVAILABLE SIZES

XS-5X



STRENGTH



EASY CARE



COTTON BLEND

WHITE





STYLE 2801 | CLASSIC FIT | WOMEN'S

DOUBLE EMBROIDERED COLLAR DRESS

- Double Embroidered Collar Dress
- Face-framing double collar
- Single breasted dress
- Comfort Shoulder Pads
- Front and back princess seams
- French cuffs on it's long sleeves
- Two spacious inseam pockets
- Triangular button tabs in the back

Center back length 46" in size 12

65% Polyester 35% Cotton, Durable Poplin

AVAILABLE SIZES

4-26



STRENGTH



EASY CARE



COTTON BLEND

WHITE



STYLE 2810 | CLASSIC FIT | WOMEN'S

FITTED MIDRIFF DRESS

- Embroidered midriff detail
- Comfort Shoulder Pads
- Soft pleats above and below waist create a beautiful shape
- Double breasted dress
- Little tucks at the shoulders of its full length sleeves
- Back elastic comfort waist
- Side slash pockets

Center back length 45" in size 12

65% Polyester 35% Cotton, Durable Poplin

AVAILABLE SIZES

4-26



STRENGTH



EASY CARE



COTTON BLEND

WHITE



UNIVERSAL LAB COATS





STYLE 806 | CLASSIC FIT | WOMEN'S

30" PRINCESS CUT CONSULTATION COAT

- Rounded lapels and front bottom edges
- Long set-in sleeves
- 4-button front closure
- 3 Pockets: 2 roomy patch pockets and 1 chest pocket with pen divider
- Front and back princess seams with back belt detail

Center back length 30" in size M

65% Polyester 35% Cotton, Durable Poplin

AVAILABLE SIZES

XXS-5X



STRENGTH

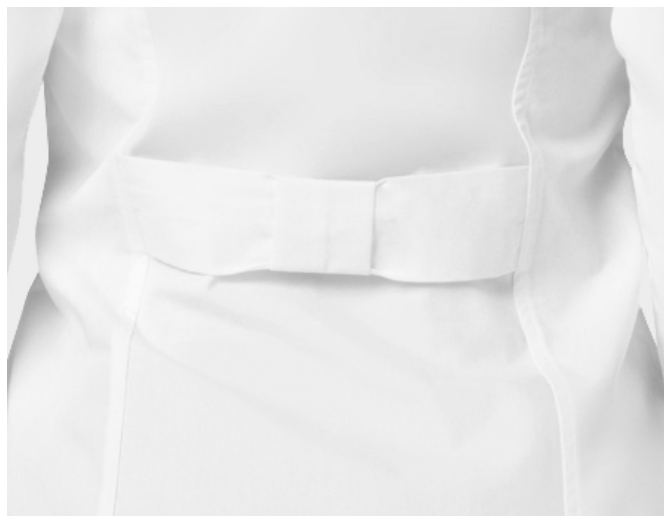


EASY CARE



COTTON BLEND

WHITE



STYLE 811 | MODERN CLASSIC FIT | WOMEN'S

32" PERFECTION LAB COAT

- 3-button front closure
- Long set-in sleeves and buttoned cuffs
- Double stitched front and back princess seams
- 2 large front multi-layered patch pockets including extra inner pockets
- Back buttoned midriff with bungee loops for adjustable figure flattering fit
- Back yoke seam and walking slit for easy movement

Center back length 32" in size M

65% Polyester 35% Cotton, Durable Poplin

AVAILABLE SIZES

XXS-5X



STRENGTH



EASY CARE



COTTON BLEND

BLACK

WHITE





STYLE 2814 | CLASSIC FIT | WOMEN'S

28" TAILORED CONSULTATION COAT

- Curved princess seaming on front
- 3-button front closure
- Fashionable back midriff belt with pleat detail
- Multi needle stitching
- 4 pockets: 2 Large front entry and 2 side entry pockets

Center back length 28" in size M

65% Polyester 35% Cotton, Durable Poplin

AVAILABLE SIZES

XXS-5X



STRENGTH



EASY CARE



COTTON BLEND

WHITE



STYLE 2817 | MODERN CLASSIC FIT | WOMEN'S

33" ADJUSTABLE BELT LAB COAT

- 4-button front closure
- Long set-in sleeves
- Rounded lapels and front princess seams
- Back slit for easy movement
- Back adjustable midriff belt
- 1 chest pocket and 2 large patch pockets

Center back length 33" in size M

65% Polyester 35% Cotton, Durable Poplin

AVAILABLE SIZES

XXS-5X



STRENGTH

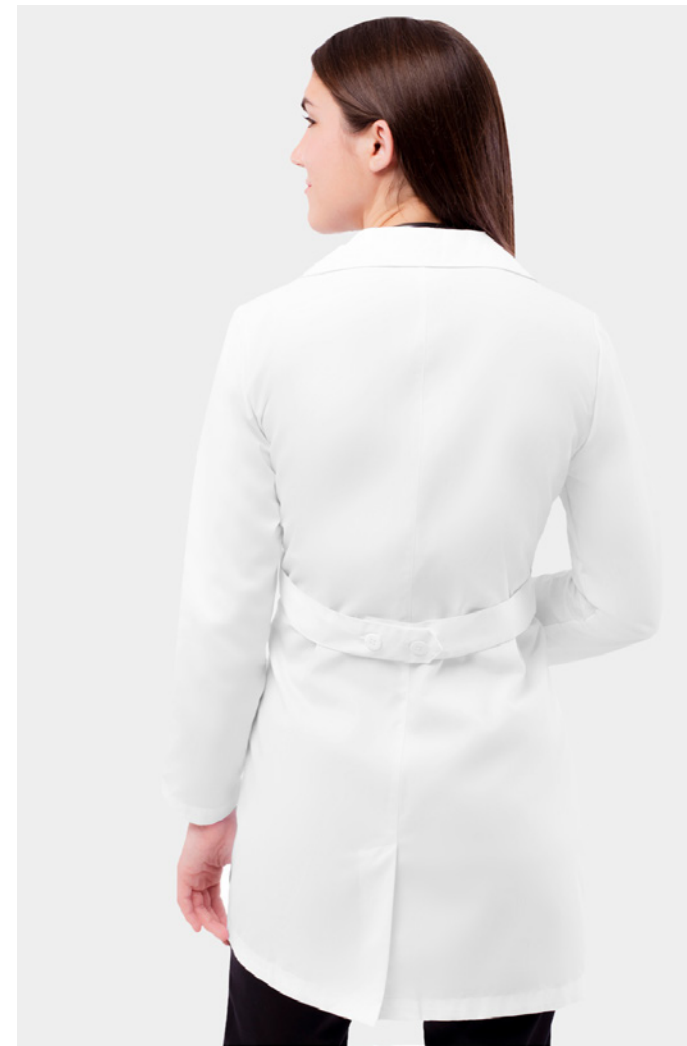


EASY CARE



COTTON BLEND

WHITE





STYLE 803 | CLASSIC FIT | UNISEX

39" LAB COAT WITH INNER POCKETS

- Five-button front closure
- 5 Pockets: 2 large patch pockets and 2 internal pockets
- One chest pocket with pen divider
- Adjustable back buttoned belt and back slit
- Side hand vents for easy access

Center back length 39" in size 42

65% Polyester 35% Cotton, Durable Poplin

AVAILABLE SIZES

34-56



STRENGTH



EASY CARE



COTTON BLEND

BLACK	PURPLE
BURGUNDY	ROYAL BLUE
CEIL BLUE	SILVER GRAY
HUNTER GREEN	TEAL BLUE
NAVY	WHITE
LIMITED EDITION	END OF SEASON
MANDARIN ORANGE	KHAKI
NEON LIME GREEN	PEWTER

STYLE 805 | CLASSIC FIT | UNISEX

31" CLASSIC CONSULTATION COAT

- Long set-in sleeves
- 3-button front closure
- 3 Pockets: 1 chest pocket with pen divider and 2 large lower pockets
- Rounded edges bottom front detail

Center back length 31" in size M

65% Polyester 35% Cotton, Durable Poplin

AVAILABLE SIZES

XXS-5X



STRENGTH

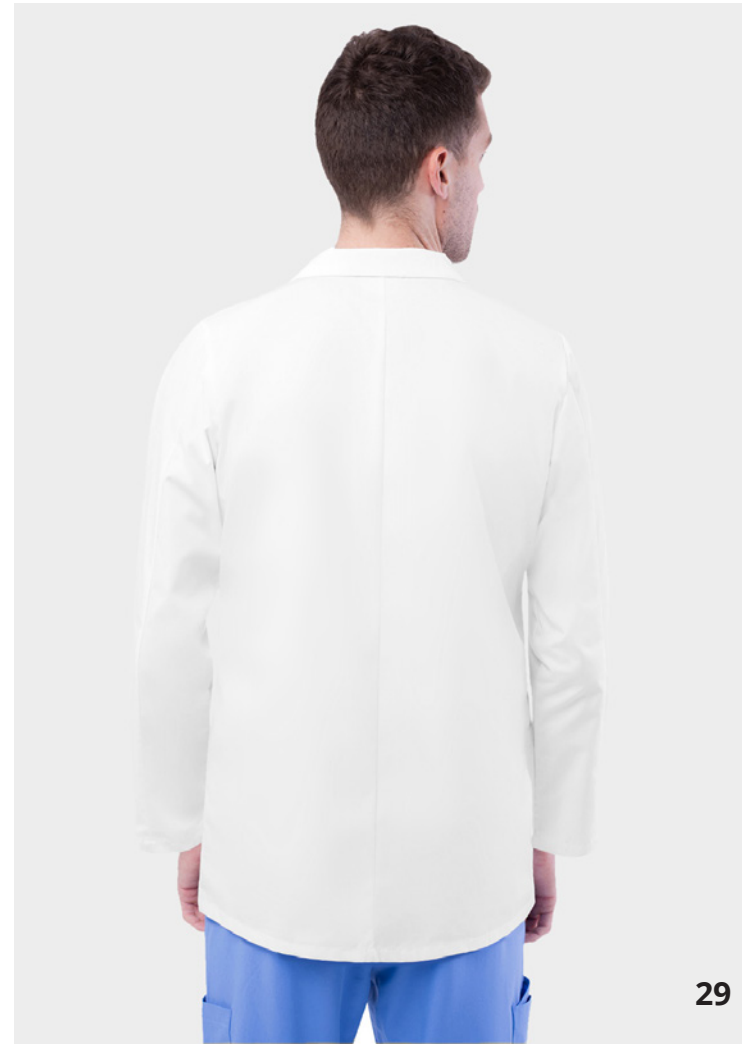


EASY CARE



COTTON BLEND

BLACK	NAVY
BURGUNDY	TEAL BLUE
CEIL BLUE	WHITE
HUNTER GREEN	END OF SEASON
	KHAKI
	OLIVE





STYLE 808 | CLASSIC FIT | UNISEX

39" MIDRIFF LAB COAT

- Five-button front closure
- 4 Pockets: 2 large patch pockets with 1 inner pocket and 1 chest pocket with pen divider
- Fashionable back midriff
- Walking slit for easy movement
- Side hand vents for easy access

Center back length 39" in size M

65% Polyester 35% Cotton, Durable Poplin

AVAILABLE SIZES

XXS-5X



STRENGTH



EASY CARE



COTTON BLEND

WHITE



STYLE 2816 | CLASSIC FIT | UNISEX

31" SHORT SLEEVE CONSULTATION COAT

- Short set-in sleeves
- 3-button front closure
- 1 chest and 2 angled lower pockets
- Chic back midriff

Center back length 31" in size M

65% Polyester 35% Cotton, Durable Poplin

AVAILABLE SIZES

XXS-5X



STRENGTH

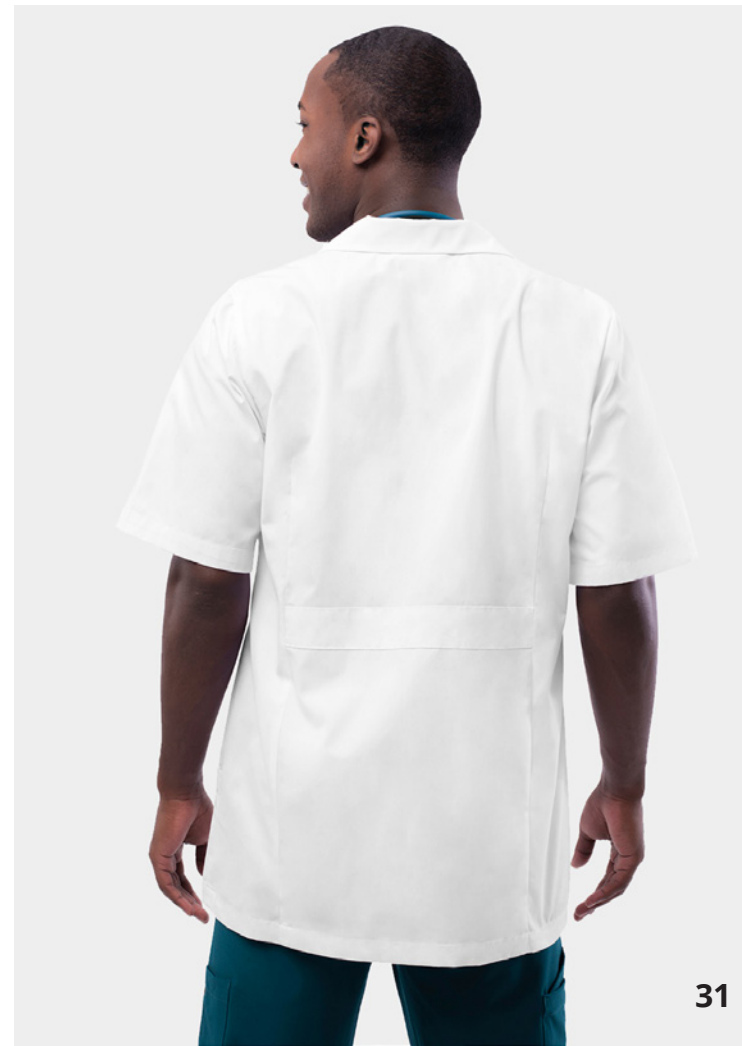


EASY CARE



COTTON BLEND

WHITE





END OF SEASON

STYLE 605 | CLASSIC FIT | WOMEN'S


LAPEL COLLAR NURSE TOP


- Princess cut button down top
- Lapel collar & tiny shoulder pleats
- 5 Button down, short sleeves
- Two roomy angled front pockets
- Lovely Back belt detailing


Center back length 28" in size M
65% Polyester 35% Cotton, Durable Poplin

AVAILABLE SIZES

XS-5X


 STRENGTH


 EASY CARE


 COTTON BLEND

WHITE



END OF SEASON

STYLE 628 | CLASSIC FIT | WOMEN'S


SWEETHEART V-NECK TOP


- Self-trimmed crossover sweetheart v-neckline
- Curved empire cut yoke and shapely princess seams in front
- Above elbow length sleeves with notched turn back cuffs
- Two roomy patch pockets, cell phone pocket on the right
- Half-inch center back elastic
- Side vents for easy movement and comfortable fit


Center back length 26 1/2" in size M
65% Polyester 35% Cotton, Durable Poplin

AVAILABLE SIZES

XXS-3X


 STRENGTH


 EASY CARE


 COTTON BLEND

BLACK	ROYAL BLUE
BURGUNDY	SHERBET
CEIL BLUE	SUBMARINE
NAVY	TEAL BLUE
PEWTER	WHITE
PURPLE	





END OF SEASON

STYLE 2600 | CLASSIC FIT | UNISEX

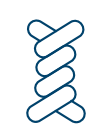
V-NECK 2 POCKET TOP

- Unisex V-neck tunic styling
- Short set-in sleeves
- Two roomy bottom patch pockets
- One inner cellphone pocket
- Side vents for easy movement and comfortable fit

Center back length 28 1/2" in size M
65% Polyester 35% Cotton, Durable Poplin

AVAILABLE SIZES

XXS-5X



STRENGTH



EASY CARE



COTTON BLEND

BLACK	REGAL BLUE
BURGUNDY	ROYAL BLUE
CEIL BLUE	TEAL BLUE
NAVY	WHITE



END OF SEASON

STYLE 6011 | CLASSIC FIT | UNISEX

V-NECK TUNIC 1 POCKET

- Short set-in sleeves
- One chest pocket with pen divider
- Side vents for easy movement and comfortable fit

Center back length 28 1/2" in size M
65% Polyester 35% Cotton, Durable Poplin

AVAILABLE SIZES

XXS-5X



STRENGTH



EASY CARE



COTTON BLEND

BLACK	REGAL BLUE
BURGUNDY	ROYAL BLUE
CEIL BLUE	SILVER GRAY
HUNTER GREEN	SURGICAL GREEN
KHAKI	TEAL BLUE
NAVY	WHITE
PEWTER	





END OF SEASON

STYLE 503 | CLASSIC FIT | WOMEN

CARGO UTILITY PANTS

- Cargo 4 pocket scrub pants
- Wide comfort full elastic waistband
- Two cargo pockets, cell phone pocket, scissor pocket on right leg
- Natural-rise, tapered legs

Inseam 30"

65% Polyester 35% Cotton, Durable Poplin

AVAILABLE SIZES: XXS-5X




 STRENGTH


 EASY CARE


 COTTON BLEND

BLACK	PURPLE
BURGUNDY	RED
CARIBBEAN BLUE	ROYAL BLUE
CEIL BLUE	SHERBET
HUNTER GREEN	SILVER GRAY
KHAKI	SUBMARINE
LAVENDER	TEAL BLUE
NAVY	TURQUOISE
OLIVE	WHITE
PEWTER	



END OF SEASON

STYLE 510 | CLASSIC FIT | WOMEN

LOW-RISE DRAWSTRING PANTS

- 5 belt loops and double needle top stitching
- Two spacious front patch pockets
- Cargo pocket and scissors pocket on right leg
Jump ring detail on left leg
- Split seaming detail at the knee
- Straight legs

Regular Inseam 31"

510P Petite: 28 1/2"

510T Tall: 33 1/2"

65% Polyester 35% Cotton, Durable Poplin

AVAILABLE SIZES

**Regular: XXS-5X
Petite: XXS-3X
Tall: XS-3X**




 STRENGTH


 EASY CARE


 COTTON BLEND

BLACK	RED
BURGUNDY	ROYAL BLUE
CEIL BLUE	SHERBET
HUNTER GREEN	SILVER GRAY
KHAKI	SUBMARINE
LAVENDER	TEAL BLUE
NAVY	TURQUOISE
PEWTER	WHITE **
PURPLE	

**** Available in Regular, Petite & Tall**





END OF SEASON

STYLE 804 | MODERN CLASSIC FIT | WOMEN'S

36" SLIM-FIT LAB COAT

- Long set-in sleeves
- Five-button front closure
- 5 Pockets: 1 chest pocket with pen divider, 2 patch pockets layered with 2 diagonal pockets
- Back princess seams and back tab belt detail

Center back length 36" in size 12

65% Polyester 35% Cotton, Durable Poplin

AVAILABLE SIZES

6-24



STRENGTH



EASY CARE



COTTON BLEND

WHITE



WOMEN'S SIZE CHART & FIT GUIDE



MEN'S SIZE CHART & FIT GUIDE



Our Collections & How They Fit

ADDITION

Contemporary Fit

PRO

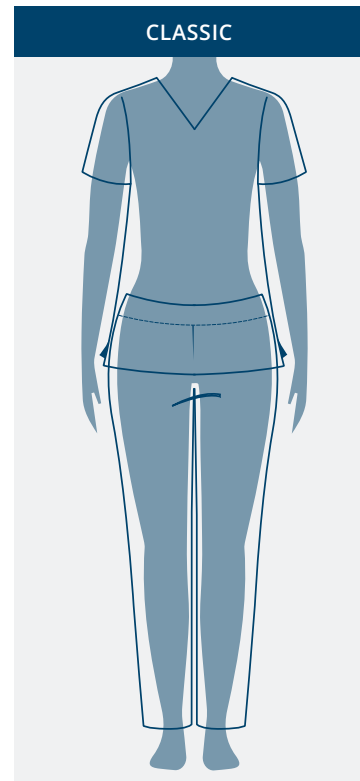
Tailored Fit

UNIVERSAL

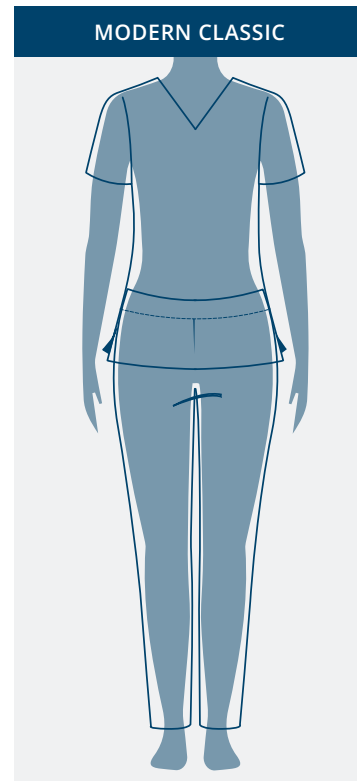
Classic Fit
Modern Classic Fit

UNIVERSAL STRETCH

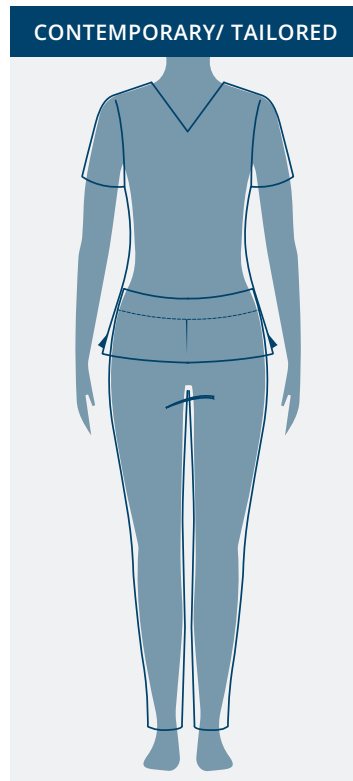
Modern Classic Fit
Contemporary Fit



Traditional roomy cut for maximum comfort.



Fits closer to the body.



Contoured to hug your curves.

Our Collections & How They Fit

ADDITION

Contemporary Fit

PRO

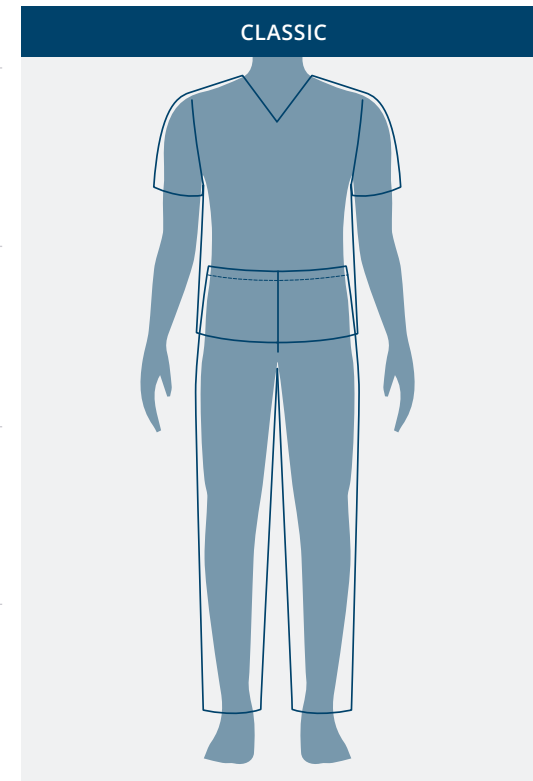
Tailored Fit

UNIVERSAL

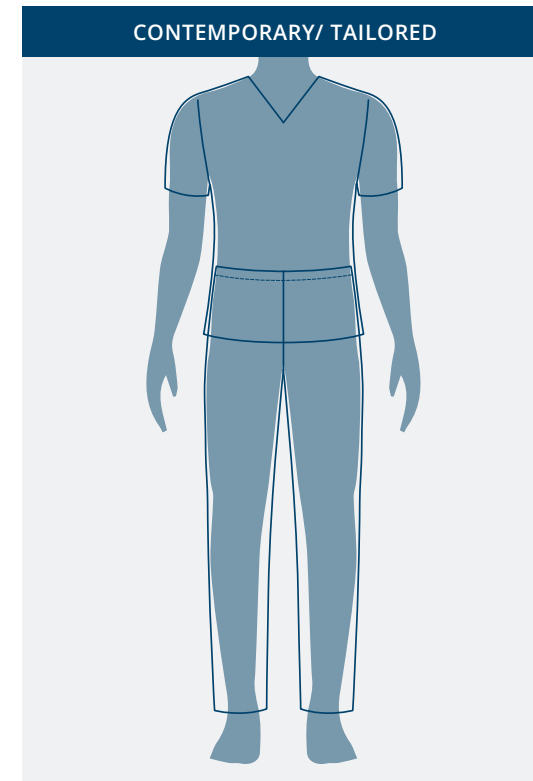
Classic Fit
Modern Classic Fit

UNIVERSAL STRETCH

Modern Classic Fit
Contemporary Fit



Traditional roomy cut for maximum comfort.



Slimmer cut for a modern fit.

ALL MEASUREMENTS COME IN INCHES

WOMEN'S SIZES	CONVERSION	BUST	WAIST
XXS	0	31-32	23-24
XS	2/4	33-34	25-26
S	6/8	35-36	27-28
M	10/12	37-39	29-31
L	14/16	40-43	32-35
XL	18/20	44-47	36-39
XXL	22/24	48-51	40-43
3XL	26/28	52-55	44-47
4XL	30/32	56-59	48-51
5XL	34/36	60-63	52-55

REGULAR INSEAM: 30 – 31½

PETITE INSEAM: 27½ – 29½

TALL INSEAM: 32½ – 33½

If one of your measurements is borderline between two sizes, order the smaller size for a tighter fit or larger for a looser fit.

If your measurements for hips and waist correspond to two different suggested sizes, order the one indicated by your hip measurements.

HOW TO MEASURE

Measure under your arms, around the fullest part of your bust.

Measure around the smallest part of your waist while loosely holding the tape measure.

Measure around the fullest part of your hip while having your feet together.

Measure the length from the crotch seam to the bottom of the leg along the inside of the pant.

BUST

WAIST

HIP

INSEAM



ALL MEASUREMENTS COME IN INCHES

MEN'S SIZES	CONVERSION	CHEST	WAIST	HIP
XXS	30	29-31	21-23	29-31
XS	32/34	32-34	24-26	32-34
S	36/38	35-37	27-29	35-37
M	40/42	38-40	30-32	38-40
L	44/46	41-44	33-36	41-44
XL	48/50	45-48	37-40	45-48
XXL	52/54	49-52	41-44	49-52
3XL	56/58	53-56	45-48	53-56
4XL	60/62	57-60	49-52	57-60
5XL	64	61-64	53-56	61-64

MEN'S INSEAM: 31-32

If one of your measurements is borderline between two sizes, order the smaller size for a tighter fit or larger for a looser fit.

If your measurements for hips and waist correspond to two different suggested sizes, order the one indicated by your hip measurements.

HOW TO MEASURE

Measure under your arms, around the fullest part of your bust.

Measure around the smallest part of your waist while loosely holding the tape measure.

Measure around the fullest part of your hip while having your feet together.

Measure the length from the crotch seam to the bottom of the leg along the inside of the pant.

CHEST

WAIST

HIP

INSEAM



UNISEX SIZE CHART & FIT GUIDE



Our Collections & How They Fit

ADDITION

Contemporary Fit

PRO

Tailored Fit

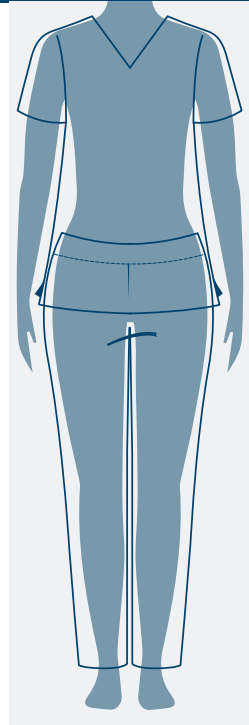
UNIVERSAL

Classic Fit
Modern Classic Fit

UNIVERSAL STRETCH

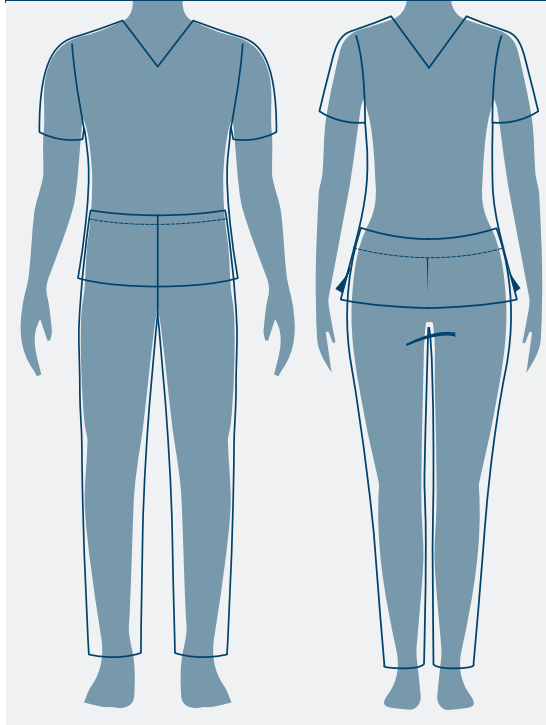
Modern Classic Fit
Contemporary Fit

CLASSIC



Generously cut for maximum comfort.

MODERN CLASSIC



Fits closer to the body.



ALL MEASUREMENTS COME IN INCHES

SIZES	CHEST	WAIST	HIP
XXS	29-31	21-23	29-31
XS	32-34	24-26	32-34
S	35-37	27-29	35-37
M	38-40	30-32	38-40
L	41-44	33-36	41-44
XL	45-48	37-40	45-48
XXL	49-52	41-44	49-52
3XL	53-56	45-48	53-56
4XL	57-60	49-52	57-60
5XL	61-64	53-56	61-64

INSEAM: 31-32

If one of your measurements is borderline between two sizes, order the smaller size for a tighter fit or larger for a looser fit.

If your measurements for hips and waist correspond to two different suggested sizes, order the one indicated by your hip measurements.

HOW TO MEASURE

CHEST

Measure under your arms, around the fullest part of your bust.

WAIST

Measure around the smallest part of your waist while loosely holding the tape measure.

HIP

Measure around the fullest part of your hip while having your feet together.

INSEAM

Measure the length from the crotch seam to the bottom of the leg along the inside of the pant.



ADAR

ELEVATE YOUR WORKWEAR



ADAR MEDICAL UNIFORMS LLC
24 Division Place
Brooklyn, NY 11222
info@adarmedicaluniforms.com
P. 866.570.6964
www.adaruniforms.com

FOLLOW US!

@adarmeduniforms

